

STENTOFON AlphaCom E7 Exchange

Features

- Next generation multiservice platform with integrated media processing engine, packet processing engine, HW encryption and storage module
- Made for critical communication and security solutions
- Embedded real time Linux operating system
- Best of both worlds – supports a mix of IP and traditional services within the same node
- Backward compatible
- SIP interoperability with VoIP systems and equipment
- Wide range of open interfaces
- Superb audio quality in all environments
- New services through Web i.e. remote programming
- Networking capabilities to extend your solution geographically

Description

The AlphaCom E combines the best of the present advanced AlphaCom system with the latest IP, Linux and embedded networking technologies. When entering the IP world, no compromise has been made. The AlphaCom E provides the complete set of existing services, quality, reliability and security characteristics for which AlphaCom has always been recognized.

Some of the special features it brings into the IP domain are wideband (7 kHz) audio, a built-in firewall, integrated Web and SIP server, hardware encryption and low latency switching.

In addition to these important characteristics, a new set of innovative services has been introduced to improve cost efficiency, service capabilities and system operation.

The cabinet has room for installation of 7 circuit boards, one AMC-IP processor board and up to 6 feature boards. The exchange also includes a power board and a cooling fan.

Several exchanges can be interconnected on AlphaNet over IP, as well as traditional methods, both locally and worldwide. All communication and services are available throughout the entire network.

The AlphaCom E-series includes extended integration of different kinds of communication and alarm systems, access control, CCTV, public address, public telephones and a variety of features and solutions that can be added when desired. It is easy to interface to 3rd party systems to create special applications.

The new technology allows remote programming, logging and maintenance via AlphaPro, Syslog and standard web browsers.

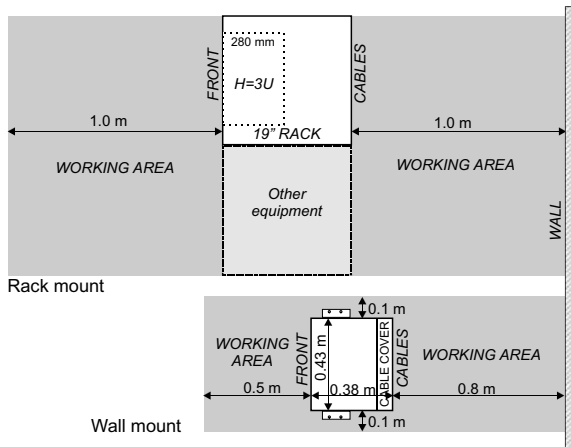


Specification

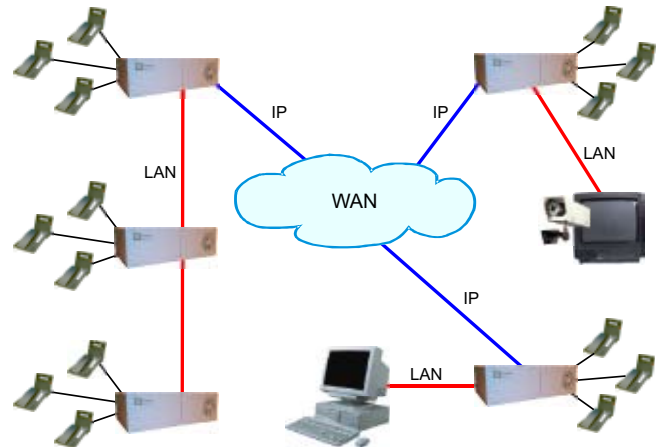
Dimensions (WxHxD)	427 x 133 x 380 mm
Weight	7 kg
Mounting	Wall, shelf or 19" rack
Power	24 V AC or DC, 260 W max.
Temperature	0 to +35°C / +32 to +95°F
Humidity range	10% to 90% RH
Connections:	
Feature cards	6 slot positions
Traditional intercom	36 x extensions with 4-wire terminal plug
Entertainment channels	2 with level control
Remote control inputs	2 x RC1
Remote control outputs	12 x RCO
Serial port	1 x RS232, 9-pin D-sub
Serial port	1 x RS232/RS422/RS485, RJ-45
Ethernet	2 x 10/100 Mbps, RJ-45
Traffic capacity:	
SIP trunks	30 channels
VoIP AlphaNet	30 channels
Digital trunks	32 channels
Analogue trunks	6 channels
IP protocols	IP v4/v6 - TCP - UDP - Telnet - FTP - NTP HTTP 1.1 - Syslog - SNMP v2c - SIP - RTP - RTCP - VoIP AlphaNet - STENTOFON data
Audio technology	High-Resolution 1-Bit Audio - High-Fidelity 40 Hz-18.5 kHz - Wideband 7 kHz (G.722) - Narrowband 3.4 kHz (G.711) - Adaptive Jitter Buffers - Adaptive Time Synchronization
EMC	Emission: IEC 61000-6-3, IEC 61000-6-4 Immunity: IEC 61000-6-1, IEC 61000-6-2
Compliance	CE, EN 60950

STENTOFON AlphaCom E7 Exchange

Installation



Networking



Connections

All cables are terminated to connectors on the backplane.

The two-pair star wired intercom cables are connected using pluggable screw connectors.

Two RJ-45 Ethernet terminals are used for IP LAN, WAN, internet and AlphaNet IP communication. Eth0 is also used for programming PC.

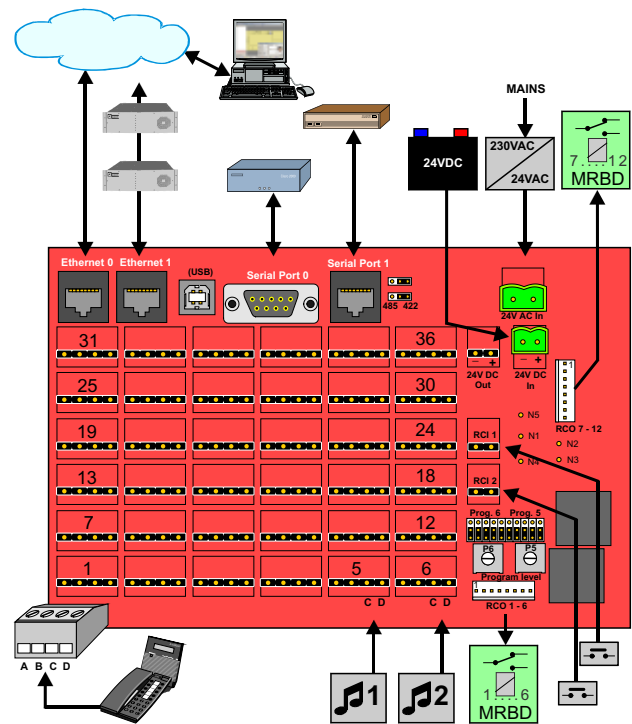
The serial ports with RS232 and RS422/485 interface are used for interface to equipment using these protocols.

The two NO switches on the RCI connectors can execute programmable functions.

The 12 RCO's are connected to optional MRBD relay boards and can be programmed to execute functions such as door control.

Connector 5 and 6 on the first ASLT line board are enabled for program distribution. Additional programs can be connected by substituting line boards by AGA boards, 6 programs per board.

The exchange is normally powered from the mains via a 24 VAC transformer. Battery backup power can be connected to the 24 VDC input plug.



Ordering information

Order Number	Description	Ship Weight
100 9607 000	AlphaCom E7 package with 2 ASLT boards for 10 subscribers	9 kg
100 9501 100	AlphaCom E7 installation kit for ASLT, ATLB, AGA and E1 boards	0.2 kg
203 0010 260	Mains transformer, 6 A, 230/24 VAC for max 24 subscribers	2.4 kg
203 0010 270	Mains transformer, 11 A, 230/24 VAC for fully equipped module	4.2 kg
100 9291 100	AlphaPro E Professional, programming tool	HW dongle



ZENITEL NORWAY AS
www.zenitel.com
marketing@zenitel.com

