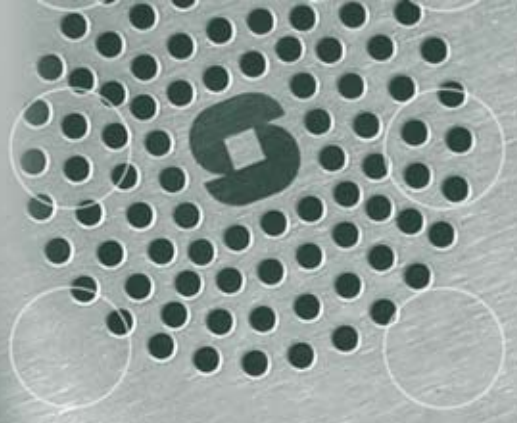


# STENTOFON AlphaCom E26 Exchange



## Features

- Next generation multiservice platform with integrated media processing engine, packet processing engine, HW encryption and storage module
- Made for critical communication and security solutions
- Embedded real time Linux operating system
- Best of both worlds – supports a mix of IP and traditional services within the same node
- Backward compatible
- SIP interoperability with VoIP systems and equipment
- Wide range of open interfaces
- Superb audio quality in all environments
- New services through Web i.e. remote programming
- Networking capabilities to extend your solution geographically



## Description

The AlphaCom E combines the best of the present advanced AlphaCom system with the latest IP, Linux and embedded networking technologies. When entering the IP world, no compromise has been made. The AlphaCom E provides the complete set of existing services, quality, reliability and security characteristics for which AlphaCom has always been recognized.

Some of the special features it brings into the IP domain are wideband (7 kHz) audio, a built-in firewall, integrated Web and SIP server, hardware encryption and low latency switching.

In addition to these important characteristics, a new set of innovative services has been introduced to improve cost efficiency, service capabilities and system operation.

The cabinet has room for installation of totally 26 circuit boards, one AMC-IP processor board, one APC program & clock board and up to 24 feature boards. The exchange also includes a mains power supply and a cooling fan.

Several exchanges can be interconnected on AlphaNet over IP, as well as traditional methods, both locally and worldwide. All communication and services are available throughout the entire network.

The AlphaCom E-series includes extended integration of different kinds of communication and alarm systems, access control, CCTV, public address, public telephones and a variety of features and solutions that can be added when desired. It is easy to interface to 3<sup>rd</sup> party systems to create special applications.

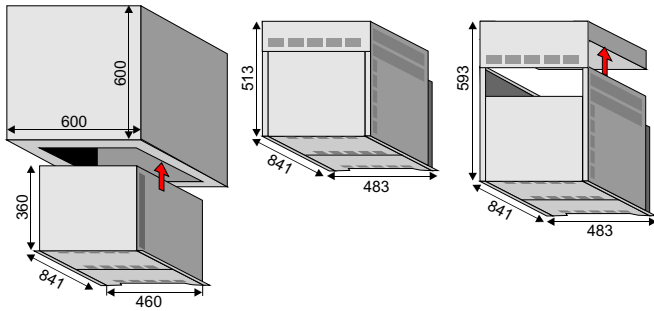
The new technology allows remote programming, logging and maintenance via AlphaPro, Syslog and standard web browsers.

## Specification

<b>Dimensions (W x H x D)</b>	
Rack mount	483 x 841 x 365 mm
Floor cabinet	483 x 841 x 513 mm
w. distribution field	483 x 841 x 593 mm
<b>Weight, rack mount</b>	
Floor cabinet	39.0 kg
w. distribution field	46.0 kg
<b>Mounting</b>	
	Floor cabinet or 19" rack
<b>Input voltage</b>	
	90 - 270 VAC
<b>Power consumption</b>	
	max. 580 W fully equipped
<b>Temperature</b>	
	0 to +35°C / +32 to +95°F environment
<b>Humidity range</b>	
	10% to 90% RH
<b>Feature cards</b>	
Traditional intercom	24 slot positions
Entertainment channels	138 extensions
Remote control outputs	6 on APC board + 16 per AGA board
Remote control inputs	6 per ASLT subscriber board
Serial port	6 on APC board
Serial port	1 x RS232, RJ-45
Serial port	1 x RS232/RS422/RS485, RJ-45
Ethernet	2 x 10/100 Mbps, RJ-45
<b>Traffic capacity</b>	
SIP trunks	30 channels
VoIP AlphaNet	30 channels
Digital trunks	32 channels
Analogue trunks	6 channels
<b>IP protocols</b>	
	IP v4/v6 - TCP - UDP - Telnet - FTP - NTP - HTTP1.1 - Syslog - SNMP v2c - SIP - RTP - RTCP - VoIP AlphaNet - STENTOFON data
<b>Audio technology</b>	
	High-Resolution 1-Bit Audio - High-Fidelity 40 Hz-18.5 kHz - Wideband 7 kHz (G.722) - Narrowband 3.4 kHz (G.711) - Adaptive Jitter Buffers - Adaptive Time Synchronization
<b>EMC,</b>	
	Emission: IEC61000-6-3, IEC61000-6-4 Immunity: IEC61000-6-1, IEC61000-6-2
<b>Compliance</b>	
	CE, EN 60950, DNV, Report no. 97-1341

# STENTOFON AlphaCom E26 Exchange

## Installation

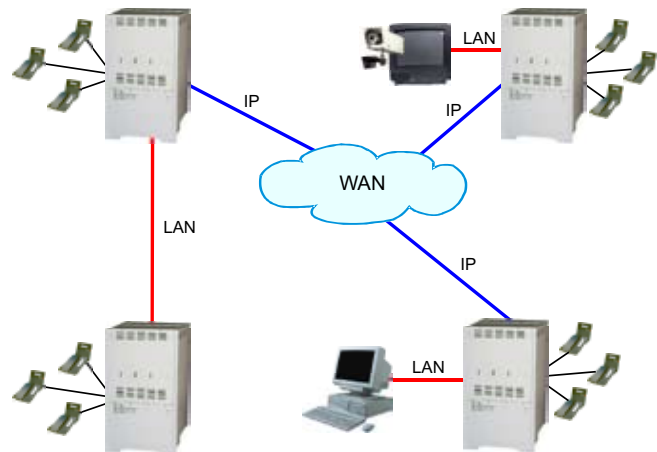


**100 9626 000**  
**AlphaCom E26**  
**19" rack mounting**  
One to four units may be mounted in one (double) rack to serve up to 552 traditional intercom subscribers.

**100 9626 100**  
**AlphaCom E26**  
**Floor cabinet**  
Side and top panels, without distribution field.

**100 9626 200**  
**AlphaCom E26**  
**Floor cabinet**  
**with distribution field**  
Side and top panels, wheels to move cabinet in front of wall mounted distribution field.

## Networking



## Connections

The two-pair star wired intercom cables are connected to connection boards or a separate distribution field.

There is one Remote Control Output (RCO) per subscriber point on the connection board which can be programmed to perform actions via an optional relay board.

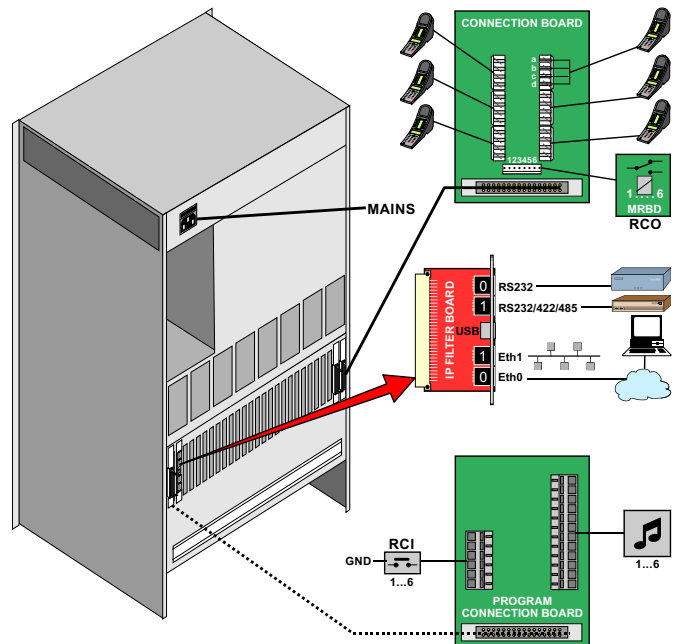
Two RJ-45 Ethernet terminals on the IP filter board are used for IP LAN and WAN communication.

The serial ports with RS232 and RS422/485 interface are used for interface to equipment using these protocols. Eth0 is also used for programming PC.

6 program distribution sources can be connected to the APC board via an optional program connection board. Up to 32 extra programs may be added using AGA boards, 16 programs per board.

The optional program connection board has input for 6 Remote Control Inputs (RCI) which can initiate programmed actions.

The exchange is powered from the mains.



## Ordering information

### Order Number Description

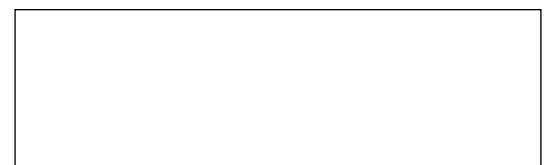
100 9626 000	AlphaCom E26 for 19" rack mounting
100 9626 100	AlphaCom E26 floor cabinet
100 9626 200	AlphaCom E26 floor cabinet with distribution field
100 9291 100	AlphaPro E Professional, programming tool

### Ship Weight

42 kg
48 kg
56 kg
HW dongle



**ZENITEL NORWAY AS**  
www.zenitel.com  
marketing@zenitel.com



A100K 10317 v1.1

AUGUST 2007